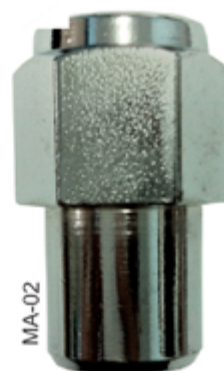


TUERCA AUTOMOTRIZ





7/16 CHEV DATSUN DODGE GALV CO-01
 7/16 CHEV DATSUN DODGE PAV CO-01N
 1/2 DODGE D-100 PICK UP GALV CO-02
 12X1.50 CODIGO K AUTOS FORD Y CHEV TROP CO-05
 12X1.50 CODIGO K AUTOS FORD Y CHEV CROM CO-05C
 12X1.75 FORD LOBO EXPEDITION TROP CO-07
 12X1.25 NISSAN TROP CO-60

CONICA HEXAGONO 3/4



9/16 CHEV Y FORD USA PICK UP GALV CO-08
 14X1.5 ALT 7/8 CHEV DOBLE R. CHEYENNE TROP CO-14

CONICA HEXAGONO 7/8



1/2 FORD CHEV AUTOS Y PICK UP GALV CO-03
 1/2 FORD CHEV AUTOS Y PICK UP PAV CO-03N
 12X1.25 DATSUN NISSAN TROP CO-04
 12X1.50 MAZDA TOYOTA MITSUBISHI TROP CO-06
 7/16 REFORZADA CHEV DATSUN DODGE GALV CO-12
 12X1.75 REFORZADA FORD LOBO TROP CO-13
 9/16 FORD CHEV CO-41
 14X2 FORD LOBO TROP CO-70

CONICA HEXAGONO 13/16



9/16 ALT 1.1/16 CHEV GALV CO-25
 5/8 DODGE 350 GALV CO-26

CONICA HEXAGONO 1"



9/16 F 350 Y C 350 GALV CO-09
 9/16 F 350 Y C 350 GALV "L" CO-09L
 9/16 F 350 Y C 350 PAV CO-09N
 5/8 DODGE D300 GALV CO-10
 5/8 DODGE D-300 GALV "L" CO-10L
 14X2 LOBO DOBLE RODADO TROP CO-11
 14X1.5 CHEV ALT 7/8 TROP CO-40

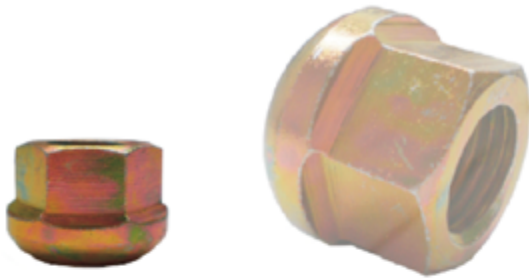
CONICA HEXAGONO 1.1/16



12X1.5 K TOPAZ VOYAGER HONDA TROP CO-15
 12X1.5 K TOPAZ VOYAGER HONDA CROM CO-15C
 1/2 CHRYSLER FORD AUTOS CAMIONETAS TROP CO-16
 1/2 CHRYSLER FORD AUTOS CAMIONETAS CROM CO-16C
 14X1.5 CHEV PICK UP Y 3 TON TROP CO-17
 14X1.5 CHEV PICK UP Y 3 TON CROM CO-17C
 12X1.25 NISSAN TROP CO-22
 12X1.25 NISSAN CROM CO-22C
 9/16 CHEV Y FORD USA TROP CO-23
 12X1.75 FORD LOBO EXPEDITION TROP CO-30
 12X1.75 FORD LOBO CROM CO-30C
 14X2 FORD LOBO TROPICALIZADO CO-63

CONICA TIPO K DESTAPADA HEX 3/4





14X1.5 COMBI TODAS TROPICALIZADA

CO-18

CONICA HEXAGONO 3/4



1/2 CHEV PICK UP Y DOBLE RODADO TROP
14X1.5 SUBURBAN CHEYENNE C15-20 TROP
12X1.25 NISSAN TIPO SUBURBAN TROP
12X1.50 CHRYSLER TIPO SUBURBAN TROP
9/16 CHEV TROP

CO-20
CO-21
CO-21A
CO-21B
CO-24

CONICA ROSCA EXTERIOR HEX 7/8



7/16 CHEV DATSUN TROP
1/2 DODGE FORD TROP
9/16 CHEV TROP
12 X 1.25 NISSAN TROP
12X1.5 DODGE TROP
14X1.5 CHEV TROP
12 X 1.75 FORD LOBO EXPEDITION TROP

CO-50
CO-51
CO-52
CO-53
CO-54
CO-55
CO-56

CONICA TIPO K DESTAPADA HEX 13/16



12X1.25 MA T12

CO-71

CONICA DESTAPADA HEX 17MM



12X1.5 CENTURY CUTLASS CAVALIER NEON G3 TROP
12X1.25 NISSAN TIPO CAVALIER TROP
1/2 FORD CHEV TIPO CAVALIER TROP

CO-19
CO-61
CO-62

CONICA ROSCA EXT HEX 3/4



30X1.5 ISUZU "R"
30X1.5 ISUZU "L"

CO-72
CO-73

CAMION DELANTERA HEX 1.5/8





20X1.5 ISUZU "R"
20x1.5 ISUZU "L"



CO-74
CO-75

CAMION TRASERA HEX 1.5/8



PLANA 12X1.25 ICHI VAN CROM



AC-09

PLACA ACERO HEX 13/16 ALT 1.7/16



7/16 D-100 C-10 DATSUN CROM
1/2 FORD Y CHEV AUTOS Y PICK UP CROM
12X1.25 NISSAN CROM
12X1.50 TOYOTA MAZDA MITSUB. CHEV CROM
12X1.75 FORD LOBO EXPEDITION CROM
14X1.50 CHEV CHEYENNE CROM
9/16 FORD USA CHEV 8 BIRLOS CROM
14X2 FORD FX2 Y FX4 CROM

AC-01
AC-02
AC-03
AC-04
AC-05
AC-06
AC-07
AC-11



PLACA ACERO HEX 13/16 UNIVERSAL



1/2 TIPO RAM CHARGER CROM
12X1.5 RAM CROM
7/16 TIPO RAM C-10 D-100 DATSUN CROM
12X1.25 TIPO RAM NISSAN CROM

AC-10
AC-24
AC-25
AC-26



PLACA ACERO HEX 3/4 ALT 1 1/4

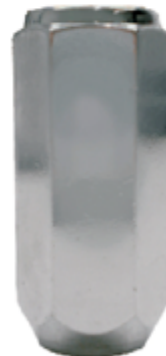


BOLITA 12X1.25 TSURU III CROM
BOLITA 12X1.25 TSURU III PAV
BOLITA 1/2 FORD CHEV CROM
BOLITA 10X1.25 MATIZ RENAULT CROM

AC-08
AC-08N
AC-20
AC-37



PLACA ACERO HEX 13/16 ALT 1 1/8



7/16 C-10 D-100 DATSUN CROM
1/2 FORD CHEV AUTOS PICK UP CROM
12X1.25 NISSAN CROM
12X1.5 FORD CHRYSLER CHEV MAZDA
TOYOTA CROM
14X1.5 FORD DODGE CHEV CROM
14X2 FORD LOBO CROM
12X1.75 FORD LOBO EXPEDITION CROM
9/16 FORD CHEV 8 BIRLOS CROM

AC-13
AC-14
AC-15
AC-16
AC-17
AC-17A
AC-18
AC-19



PLACA ACERO HEX 13/16 ALT 2.1/8





BOLITA 12X1.5 FORD CHEV CROM

AC-21

ACERO HEX 3/4 ALT 1"



10X1.25 MATIZ RENAULT CROM

AC-38

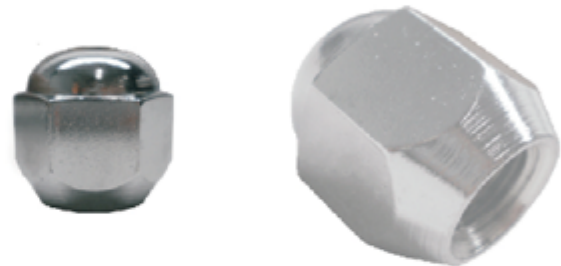
PLANA HEX 13/16 ALT 1.1/8



BOLITA 12X1.5 YARIS TOYOTA MAZDA MITSUBISHI CROM
BOLITA 12X1.25 TSURU III CROM

AC-22
AC-08A

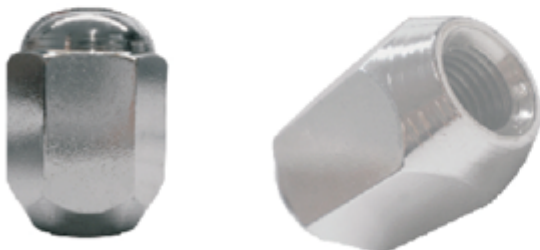
ACERO HEX 13/16 ALT 1 1/4



BOLITA 12X1.25 TSURU III CROM

AC-40

PLACAACERO HEX 13/16 ALT 1"



BOLITA 7/16 C-10 D100 DATSUN CROM 20H
BOLITA 1/2 C-10 D100 FORD CHEV CROM 20H
BOLITA 9/16 FORD CHEV CROM 18H
BOLITA 12X1.25 NISSAN CROM
BOLITA 12X1.5 CHEV DODGE FORD CROM
BOLITA 12X1.75 FORD LOBO EXPEDITION CROM
BOLITA 12X1.75 FORD LOBO EXPEDITION CROM
BOLITA 14X1.5 CHEV CHEYENNE CROM

AC-30
AC-31
AC-32
AC-33
AC-34
AC-35
AC-35E
AC-36

ACERO HEX 13/16 ALT 1.7/16



1/2 FORD CHEV CROM
9/16 FORD CHEV CROM
14X1.5 CHEV CHEYENNE CROM
12X1.25 NISSAN CROM

AC-50
AC-51
AC-52
AC-53

ACERO REFORZADA HEX 7/8 ALT 1.13/16





7/16 C-10 D-100 DATSUN CROM
 1/2 FORD DODGE CROM
 12X1.25 NISSAN CROM
 12X1.5 CHRYSLER FORD AUTOS CROM
 14X1.5 CHEV CHEYENNE CROM
 14X 2 FORD LOBO CROM
 9/16 CHEV FORD CROM

AC-60
 AC-61
 AC-62
 AC-63
 AC-64
 AC-65
 AC-66

PLACA ACERO HEX 3/4 ALT 1.1/2



12X1.25 TSURU I Y II CROM

AC-82

PLACA ACERO PLANA HEX 13/16 ALT 1.1/4



7/16 C-10 D-100 DATSUN GALV
 1/2 FORD CHEV GALV
 12X1.25 NISSAN GALV
 12X1.5 CHRYSLER FORD GALV
 9/16 CHEV FORD GALV
 14X1.5 CHEV CHEYENNE GALV
 12X1.75 FORD LOBO EXPEDITION GALV

AC-70
 AC-71
 AC-72
 AC-73
 AC-74
 AC-75
 AC-76

PLACA ACERO HEX 3/4 DESTAPADA



7/16 C-10 D-100 DATSUN CROM
 1/2 FORD CHEV AUTOS Y PICK UP CROM
 12X1.25 NISSAN AUTOS Y PICK UP CROM
 12X1.5 TOYOTA MAZDA MITSUBISHI
 CHRYSLER FORD CHEVROLET CROM
 12X1.75 FORD LOBO CROM
 14X1.5 CHEV CHEYENNE CROM
 10X1.25 CROM
 14X2 FORD LOBO CROM
 9/16 FORD CHEV CROM

MA-01
 MA-02
 MA-03
 MA-04
 MA-05
 MA-06
 MA-38
 MA-39
 MA-40

MAGNESIO UNIVERSAL HEX 13/16



14X1.5 H-100 CROM

AC-80

PLACA ACERO BOLITA HEX 7/8 ALT 1.1/16



7/16 D-100 C-10 DATSUN CROM
 1/2 FORD CHEV AUTOS PICK UP CROM
 12X1.25 NISSAN CROM
 12X1.5 TOYOTA MAZDA MITSUBISHI
 CHRYSLER FORD CHEVROLET CROM
 14X1.5 CHEV CHEYENNE CROM
 12X1.75 FORD LOBO CROM
 9/16 CHEV FORD CROM

MA-07
 MA-08
 MA-09
 MA-10
 MA-11
 MA-12
 MA-13

MAGNESIO CUELLO 1.1/4 HEX 13/16 ALT 2"





7/16 C-10 D-100 DATSUN CROM MA-14
 1/2 FORD CHEV AUTOS PICK UP CROM MA-15
 12X1.25 NISSAN CROM MA-16
 12X1.5 TOY MAZ MITS FORD CHEV CROM MA-17
 14X1.5 CHEV CHEYENNE CROM MA-18
 12X1.75 FORD LOBO CROM MA-19
 9/16 CHEV FORD CROM MA-20

MAG CUERPO 1.1/4 HEX 13/16 ALT 2"



1/2 FORD CHEV CROM MA-41
 12X1.25 NISSAN CROM MA-42
 12X1.5 MAZDA MITSUBISHI TOYOTA FORD CHEV MA-43
 7/16 C-10 D-100 DATSUN CROM MA-44

MAG. CUELLO 1.1/2 CUERPO 1" HEX 13/16



7/16 20H C-10 D-100 DATSUN CROM MA-21
 1/2 20H FORD CHEV AUTOS PICK UP CROM MA-22
 9/16 18H FORD CHEV CROM MA-23
 12X1.25 NISSAN CROM MA-24
 12X1.5 MAZ TOY MITSU CHEV FORD CROM MA-25
 14X1.5 CHEV CHEYENNE CROM MA-26
 12X1.75 FORD LOBO CROM MA-27

MAG. BOTELLA HEX 13/16 ALT 1.1/2



12X1.5 MITSUBISHI CROM MA-46

MAG. BOLITA HEX 3/4 ALT 1.5/8



1/2 FORD CHEV AUTOS Y PICK UP CROM MA-30
 12X1.25 NISSAN CROM MA-31
 12X1.50 TOY MAZ MITS FORD CHEV CROM MA-32

MAG. CUELLO 1.3/4 HEX 13/16 ALT 2.1/2



7/16 C-10 D-100 DATSUN CROM MA-50
 1/2 FORD CHEV AUTOS Y PICK UP CROM MA-51
 9/16 CHEV FORD CROM MA-52
 12X1.25 NISSAN CROM MA-53
 12X1.5 MAZ TOY FORD CHEV CHRY CROM MA-54
 14X1.5 CHEV CHEYENNE CROM MA-55
 14X2 LOBO FORD CROM MA-56
 12X1.75 FORD LOBO CROM MA-57

MAG. BOTELLA 2.5/16 HEX 13/16





REFORZADA 7/16 D-100 C-10 CROM MA-80
 REFORZADA 1/2 FORD CHEV DODGE MA-81
 REFORZADA 9/16 CHEV FORD CROM MA-82
 REFORZADA 9/16 "L" FORD CHEV CROM MA-83
 REFORZADA 5/8 DODGE FORD CROM MA-84
 REFORZADA 5/8 "L" DODGE FORD CROM MA-85
 REFORZADA 14X1.5 CHEV CROM MA-86

MAG. CUERPO 1.3/8 HEX 1" ALT 2.7/16



12X1.5 AUTOS CHRYSLER FORD CHEV TK-01
 NUEVOS TOYOTA MAZDA CROM TK-02
 1/2 FORD CHEV RAM VALIANT CROM TK-03
 12X1.25 NISSAN CROM TK-04
 14X1.5 CHEYENNE CROM TK-14

TIPO "K" HEX 3/4 ALT 1.1/4



12X1.5 RONDANA FLOTANTE TOYOTA YARIS CROM MA-89

MAGNESIO HEX 13/16 ALT 40MM



12X1.5 TOPAZ MUSTANG CROM TK-03
 14X1.5 CHEV CHEYENNE CROM TK-05
 1/2 AUTOS FORD CHEV CROM TK-06
 12X1.25 NISSAN CROM TK-21
 12X1.75 FORD LOBO CROM TK-40

TIPO "K" HEX 3/4 ALT 1 1/2



7/16 D-100 C-10 DATSUN GALV MA-90
 1/2 FORD CHEV AUTOS PICK UP GALV MA-91
 9/16 CHEV FORD GALV MA-92
 12X1.25 NISSAN GALV MA-93
 12X1.5 AUTOS Y PICK UP FORD CHEVROLET MA-94
 DODGE GALV MA-94
 14X1.5 CHEV GALV MA-95
 12X1.75 FORD LOBO EXPEDITION GALV MA-96

MAGNESIO DESTAPADA HEX 13/16 ALT 1 1/4



7/16 D-100 C-10 DATSUN CROM TK-07
 1/2 CHEV FORD AUTOS PICK UP CROM TK-08
 9/16 FORD CHEV DODGE PICK UP CROM TK-09
 12X1.25 NISSAN CROM TK-10
 12X1.5 AUTOS Y PICK UP FORD CHEV TK-11
 DODGE TOYOTA MAZDA CROM TK-11
 14X1.5 CHEV CHEYENNE CROM TK-12
 12X1.75 FORD LOBO EXPEDITION CROM TK-13
 14X2 FORD LOBO HARLEY FX4 CROM TK-33

TIPO "K" LARGA HEX 3/4 ALT 1.3/4





12X1.5 RONDANA INT. VOYAGER -COUNTOUR

TK-16

TIPO "K" HEX 3/4 ALT 1 3/4



12X1.5 HONDA CIVIC ASIENTO CONICO CROM

TK-19

TIPO "K" HEX 3/4 ALT 1.5/16



9/16 RAM 2500-1500 2002-10 RAM
1/2 TIPO RAM 2500 PICK UP FORD
CHEV Y AUTOS
14X1.5 TIPO RAM 2500 CHEYENNE CROM

TK-17

TK-52

TK-53

TIPO "K" HEX 7/8 ALT 1 1/2



12X1.5 HONDAACORD ASIENTO CONICO CROM

TK-20

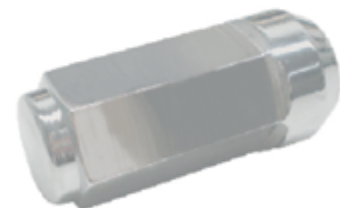
TIPO "K" HEX 3/4 ALT 1.7/16



12X1.5 ATOS CROM

TK-18

TIPO "K" RONDANA INTERIOR HEX 13/16



14X2 FORD LOBO CROM

TK-22

TIPO "K" LARGA HEX 3/4 ALT 2"





12X1.5 AUTOS HONDA ASIENTO ESFERICO CROM

TK-23

TIPO "K" HEX 3/4 ALT 1.1/16



12X1.25 SENTRA RONDANA NYLAMID CROM

TK-34

TIPO "K" HEX 13/16 ALT 33MM



12X1.25 SAKURA RONDANA INTERIOR CROM
12X1.5 SAKURA TOYOTA RONDANA INTERIOR CROM

TK-30
TK-31

TIPO "K" HEX 13/16 ALT 1.1/2



TK-34A RONDANA NYLAMID PARA TK-34



12X1.5 MONDEO IKON COURIER FIESTA KA
CROMADA CON RONDANA FLOTANTE

TK-32

TIPO "K" HEX 3/4 ALT 30MM



1/2 RONDANA INTEGRADA EXPLORER TROP

TK-35

TIPO "K" HEX 3/4 ALT 33MM





14X1.5 DESTAPADA H-100 GALV

TK-36

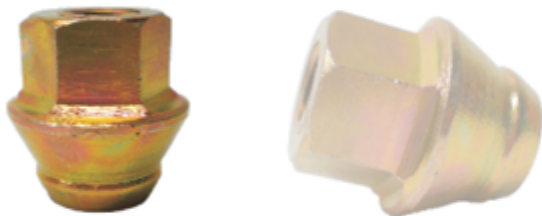
TIPO "K" HEX 22MM ALT 25MM



14X2 LOBO PICK UP 2002/04
DOBLE HARLEY GALV

TK-70

DESTAPADA HEX 13/16 ALT 1.1/4



12X1.5 DESTAPADA MONDEO IKON COURIER
FIESTA ESCAPE TROP

TK-37

TIPO "K" HEX 3/4 ALT 30MM



1/2 TIPO DURANGO FORD CHEV CROM
7/16 TIPO DURANGO C-10 D-100 DATSUN CROM
9/16 TIPO DURANGO CHEV FORD CROM
12X1.25 TIPO DURANGO NISSAN CROM
12X1.5 TIPO DURANGO CHRYSLER FORD CHEV CROM
14X1.5 TIPO DURANGO CHEYENNE CROM
12X1.75 TIPO DURANGO FORD LOBO EXPEDITION CROM

TK-80

TK-81

TK-82

TK-83

TK-84

TK-85

TK-86

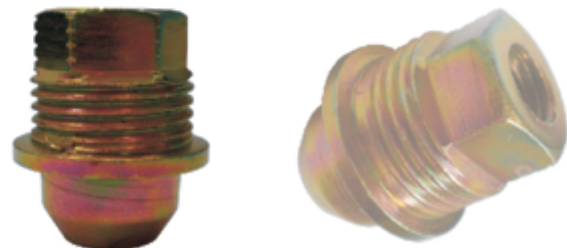
TIPO "K" HEX 13/16 ALT 1.7/16



16X1.5 DISCOVERY LAND ROVER CROM

TK-60

TIPO "K" HEX 27MM



12X1.5 RONDANA INTEGRADA ROSCA EXTERIOR
CAVALIER TROP

TK-90

TIPO "K" HEX 19MM ALT 34MM





12X1.25 MATIZ CROM

TK-91

TIPO "K" HEX 17MM ALT 24MM



14X1.5 CAMARO CHARGER
CHALLENGER CROM

TK-94

TIPO "K" HEX 7/8 ALT 1.9/16



14X2 TAPADA FLOTANTE LOBO CROM

TK-92

TIPO "K" HEX 7/8 ALT 1.9/16



12X1.5 TACOMA-COROLLA CAMRY CROM
RONDANA FLOTANTE CORTA

TK-95

TIPO "K" HEX 21MM ALT 37MM



12X1.5 LINCOLN MARINER DOBLE
RONDANA INTEGRADA CROM

TK-93

TIPO "K" HEX 3/4 ALT 1.7/16



12X1.5 TACOMA-COROLLA CAMRY TUNDRA
RONDANA FLOTANTE LARGA CROM

TK-96

TIPO "K" HEX 21MM ALT 47MM

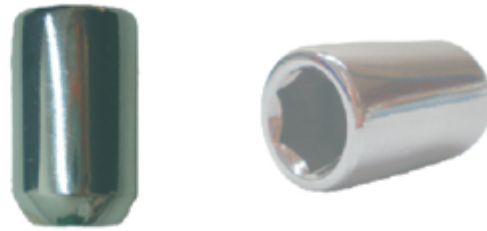




1/2 MUSTANG 2006 CROM

TK-97

TIPO "K" HEX 13/16 ALT 1.9/16



1/2 20H FORD CHEV AUTOS Y PICK UP
12X1.25 NISSAN AUTOS Y PICK UP
12X1.5 TOYOTA MAZDA MITSUBISHI
CHRYSLER FORD CHEVROLET

TU-01
TU-02
TU-03

TUERCA TUNNER NACIONAL HEXAGONAL



14X1.5 ODYSSEY PILOT HONDA
ASIENTO ESFERICO CROM

TK-98

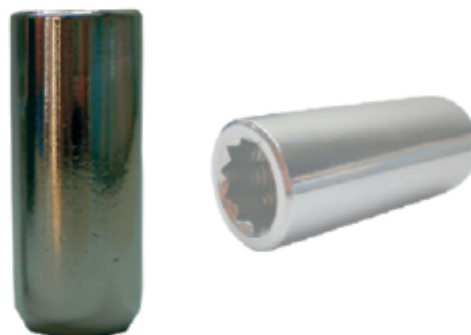
TIPO "K" HEX 22MM ALT 1.3/8



7/16 DATSUN G-10 D-100 CROM
1/2 FORD CHEV AUTOS Y PICK UP CROM
12X1.25 NISSAN CROM
12X1.5 FORD CHEV DODGE CROM

DU-01
DU-02
DU-03
DU-04

**TUERCA DUAL CUELLO CORTO
HEX 13/16 UNIVERSAL**



14X1.5 ESTRIADO CHEV CHEYENNE
14X2 ESTRIADO FORD LOBO
12X1.75 ESTRIADO FORD LOBO
9/16 ESTRIADO FORD CHEV

TU-27
TU-28
TU-29
TU-30

**TUERCA TUNNER IMPORTADA
EXTRA LARGA**





12X1.25 NISSAN AUTO Y PICK UP **TU-31**
 12X1.5 TOYOTA MAZDA MITSUBISHI CHRYSLER **TU-32**
 FORD CHEVROLET
 1/2 FORD CHEV AUTOS Y PICK UP **TU-33**

TUERCA TUNNER 7 PUNTAS



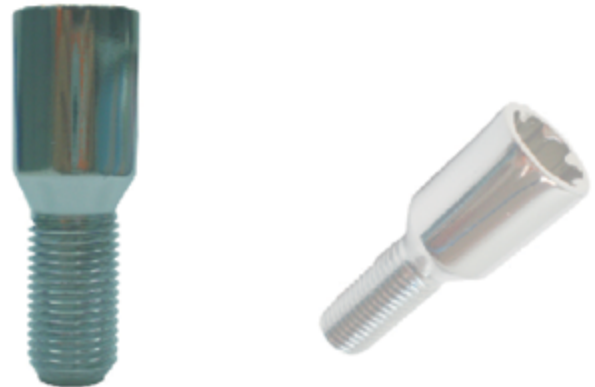
14X1.5 BEETLE EURO VAN CARIBE GOLF PASSAT BORA VW **TU-07**

BIRLO TUNNER NACIONAL



12X1.25 NISSAN AUTOS Y PICK UP **TU-06**
 12X1.5 CHEVY TORNADO MONZA VW SEDAN ATLAN- **TU-20**
 TIC POINTER MERCEDEZ PLATINA CLIO

BIRLO TUNNER NACIONAL HEXAGONAL



14X1.5 BEETLE EURO VAN CARIBE GOLF PASSAT BORA VW **TU-25**
 12X1.5 CHEVY TORNADO MONZA VW SEDAN ATLAN- **TU-26**
 TIC POINTER MERCEDEZ PLATINA CLIO

BIRLO TUNNER IMP. 7 PUNTAS



**TU-10 LLAVE NACIONAL TUNNER
HEXAGONAL**



TU-24 LLAVE IMPORTADA 7 PUNTAS



**TU-101 LLAVE IMPORTADA TUNNER
HEXAGONAL**



SIN CASQUILLO

CASQUILLO (CV-01)

**TV-01 TAPON PARA VALVULA DE
LAMINA CROMADO**



**TU-13 LLAVE IMPORTADA
TUNNER ASTRIADA**



SIN CASQUILLO

CASQUILLO (CV-01)

TV-02 TAPON DE VALVULA CROMADO





TV-03 TAPON DE VALVULA AMD®



- 1/2 20 HILOS SE-01
- 12X1.25 SE-02
- 12X1.5 SE-03
- 14X1.5 SE-04
- 9/16 SE-05
- 14X2 SE-06
- 12X1.75 SE-07

JUEGO DE SEGURO PARA PLACA



TAPON TV-01

TAPON TV-02

CV-01 CASQUILLO PARA VALVULA CROMADO



- 12X1.25 LARGO SE-08
- 12X1.5 CORTO SE-10
- 14X1.5 CORTO SE-11
- 12X1.5 LARGO SE-12
- 14X1.5 LARGO SE-13

JUEGO DE SEGURO PARA BIRLO

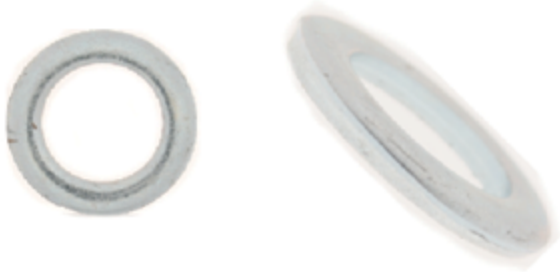


MR-01 MEDIDORES DE ROSCA



- 5/16 X 1.3/4
- 5/16 X 2 1/2
- SP-20
- SP-21

JUEGO DE SEGURO PARA POLVERA



RONDANA PARA RIN DE LUJO

RL-01

RONDANA PARA RIN DE LUJO



CASQUILLO PARA RIN PLACA ACERO ABOCINADO

RL-04

CASQUILLO PARA RIN PLACA ACERO



RONDANA PARA RIN DE LUJO GRANDE

RL-02

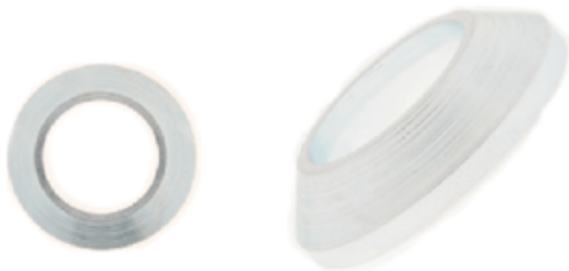
RONDANA PARA RIN DE LUJO GRANDE



1/4 X 1
1/4 X 1 1/2
5/16 X 1
5/16 X 1 1/2
3/8 X 1
3/8 X 1 1/2
7/16 X 1
7/16 X 1 1/2
1/2 X 1
1/2 X 1 1/2
1/2 X 2

CC-01
CC-02
CC-03
CC-04
CC-05
CC-06
CC-07
CC-08
CC-09
CC-10
CC-11

COCHE CROMADO C/TCA



CASQUILLO PARA RIN MAGNESIO

RL-03

CASQUILLO PARA RIN MAGNESIO ABOCINADO

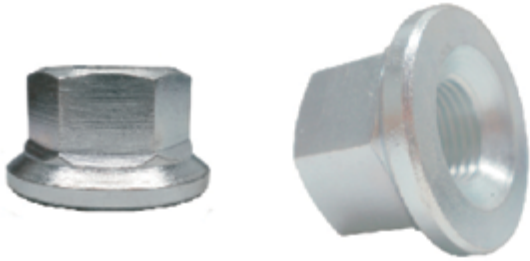


TAPON CARTER 1/2 20H.
TAPON CARTER 14X1.5

TA-01
TA-02

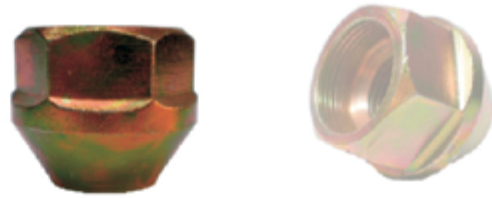
TAPON CARTER





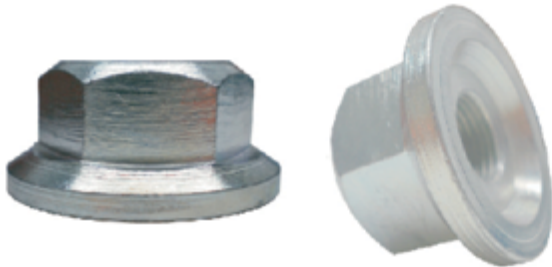
9/16 CHEV DOBLE RODADO GALV CA-01
9/16"L CHEV DOBLE RODADO GALV CA-01L
9/16 CHEV DOBLE RODADO PAV CA-01N

CAMPANA SOLIDA HEX 7/8



9/16 RAM 2500 TURBO DIESEL TROPICALIZADA CA-06

CAMPANA SOLIDA HEX 15/16



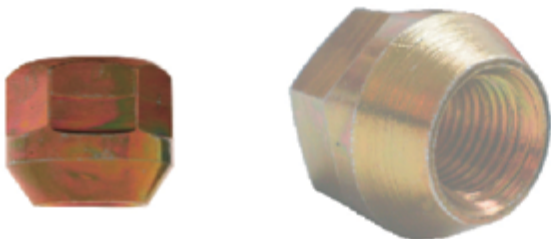
5/8 D-300 GALV CA-02
5/8L D-300 GALV CA-02L
11/16 CAMION CHEV GALV CA-04
3/4 16H GALV CA-05

CAMPANA SOLIDA HEX 1.1/8



9/16 CHEV DOBLE RODADO PAV CAF-01
14X1.5 CHEV PAV CAF-06

CAMPANA FLOTANTE HEX 7/8 ROND. 1.1/4



14X1.5 CHEV 3 TONELADAS TROP CA-03

CONICA HEX 7/8



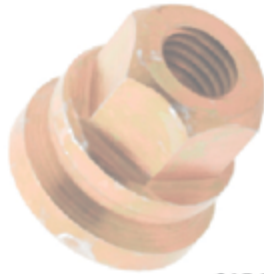
5/8 D-300 DOBLE RODADO PAV CAF-02

**CAMPANA FLOTANTE
HEX 1.1/8 ROND. 1.5/8**





12X1.75 LOBO TROP
14X1.5 LOBO CHEV
1/2 TIPO LOBO



CAF-03
CAF-10
CAF-40

CAMPANA FLOTANTE HEX 3/4 ROND 1.1/8



9/16 CHEV PAV



CAF-08

CAMPANA FLOTANTE HEX 7/8 ROND. 1.5/8



CAMPANA FLOTANTE 22X1.5 NAL.
CAMPANA FLOTANTE 22X1.5 IMP.

CAF-05
CAF-30

FLOT. HEX 33MM ROND. 1.13/16



9/16 CHEV PAV



CAF-09

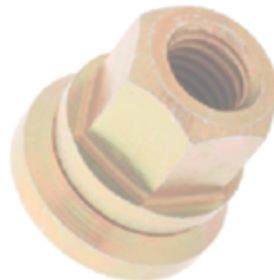
CAMPANA FLOTANTE
HEX 15/16 ROND 1.5/8



14X2 LOBO 4X4 HARLEY TROP
14X2 LOBO 4X4 HARLEY CROM

CAF-07
CAF-07C

CAMPANA FLOTANTE HEX 13/16



18X1.5 ALT 1.1/16 AUTOBUSES Y
CAMIONES DINA URBANOS
9/16 FORD DODGE 4000 PAV

CAF-11

CAF-14

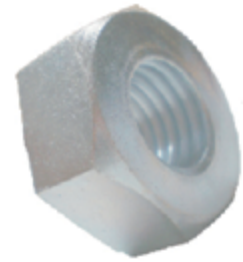
CAMPANA FLOTANTE HEX 1.1/16 ROND 1.5/8





14X1.5 ROSCA EXT. DOBLE RODADO CHEV PAV CAF-12
9/16 ROSCA EXTERIOR CHEV PAV CAF-13

CAMPANA FLOTANTE HEX 22MM ROND 1.5/8



ARTILLERIA 5/8 GALVANIZADO
ARTILLERIA 5/8 PAVONADO

AR-01
AR-01N

ARTILLERIA HEX 1.1/16



CAMPANA FLOTANTE 14X1.5 CAF-15
TRITON F350 F450 F550 F650 TROP

CAMP. FLOT. HEX 13/16 ROND. 1. 1/8



ARTILLERIA 3/4 GALVANIZADA
ARTILLERIA 3/4 PAVONADA

AR-02
AR-02N

TUERCA ARTILLERIA HEX 1.1/4



9/16 TIPO LOBO

CAF-16

CAMPANA FLOTANTE HEX 13/16

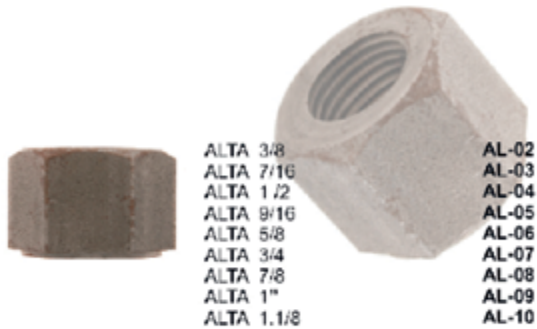


TUERCA BAJA 5/8 NF

TB-01

TUERCA BAJA





ALTA 3/8 AL-02
 ALTA 7/16 AL-03
 ALTA 1/2 AL-04
 ALTA 9/16 AL-05
 ALTA 5/8 AL-06
 ALTA 3/4 AL-07
 ALTA 7/8 AL-08
 ALTA 1" AL-09
 ALTA 1.1/8 AL-10

TUERCA ALTA MAQUINADA



1" 14H F-600
 1" 12H D-500/600

MP-01
 MP-02

MANGO CASTILLO HEX 1.1/2 ALT 5/8



ALTA 1/2 GDO8 AL-04G8
 ALTA 9/16 GDO8 AL-05G8
 ALTA 5/8 GDO8 AL-06G8
 ALTA 3/4 GDO8 AL-07G8
 ALTA 7/8 GDO8 AL-08G8
 ALTA 1" GDO8 AL-09G8
 ALTA 1.1/8 GDO8 AL-10G8

TUERCA ALTA GRADO 8



1" 20H CASTILLO F-600

MP-03

MANGO PIÑON HEX 1.1/2 ALT 9/16



1/2 NF CS-01
 9/16 NF 18H CS-02
 5/8 NF 18H HEX 15/16 CS-03
 3/4 NF 16H CS-04
 7/8 14H HEX 1.1/4 CS-05
 1" NF 14H CS-06
 1" 14H HEX 1.1/2 UNIV Y MERCEDES CS-07
 1" 8H UNIVERSAL CS-08
 9/16 12H HEX 7/8 CS-09
 7/8 9H UNIV. HEX 1.1/4 CS-10
 1/2 13H NC CS-11
 12X 1.25 HEX 3/4 NISSAN CS-12
 5/8 NC 11H HEX 15/16 CS-13
 3/4 NC 10H CS-14
 14X1.5 HEX 7/8 CS-15
 14X2 HEX 7/8 CS-16

TUERCA CASTILLO

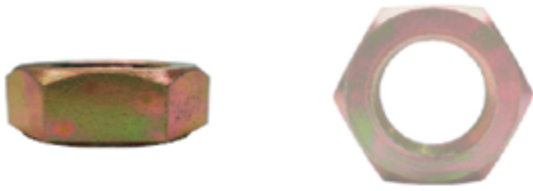


3/4 18H AUTO/PICK UP
 3/4 20H AUTO/PICK UP

MP-04
 MP-05

MANGO CASTILLO HEX 1.1/16 ALT 9/16

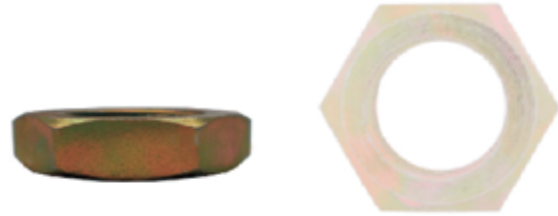




3/4 20H AUTO/PICK UP

MP-06

MANGO PLANA HEX 1.1/16 ALT 9/16



7/8 14H F100/350
7/8 16H D100/300

MP-11
MP-12

MANGO PLANA HEX 1 1/4 ALT 7/16



3/4 16H AUTO/PICK UP
7/8 16H D-300/100

MP-07
MP-08

MANGO CASTILLO HEX 1.1/4 ALT 5/8



7/8 14H ALT 1" F350

MP-13

MANGO CASTILLO HEX 1.1/4



16X1 VOLANTE DIRECCION AUTO/PICK UP MP-09
16X1.5 VOLANTE DIRECCION AUTO/PICK UP MP-10

MANGO HEX 15/16 PLANA ALT 5/16

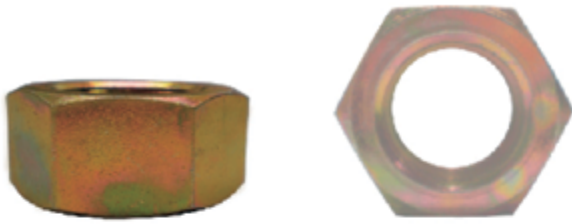


3/4 16H AUTOS Y PICK UP

MP-14

MANGO PLANA HEX 1.1/16 ALT 3/8





22X1 TSURU 84/87

MP-15

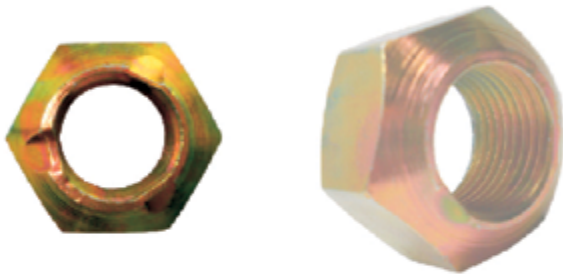
MANGO FLECHA HEX 1.1/4 ALT 7/8



1/2 ALT 9/16 MASSEY DEL Y FORD 5000
5/8 ALT 7/8
9/16 ALT 3/4

AG-01
AG-02
AG-03

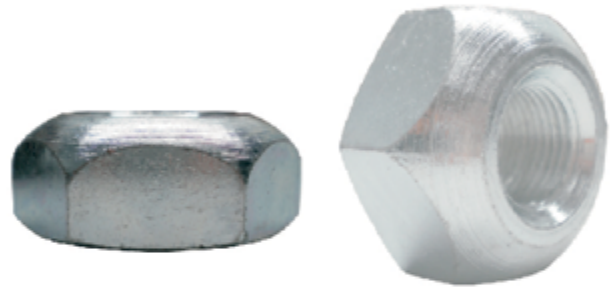
CONICA AGRICOLA HEX 1.1/16



3/4 16H PIÑON DATSUN

MP-16

MANGO FLECHA HEX 1.1/8



3/4 TRASERA FORD 5000
3/4 "L" TRASERA FORD 5000

AG-04
AG-04L

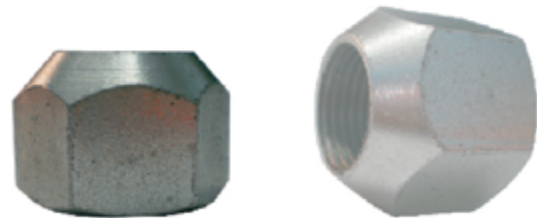
AGRICOLA HEX 1.1/2 ALT 7/8



16X1.5 R-12-18 NYLON

MP-17

MANGO HEX 15/16 ALT 5/8



11/16 TRASERA INTERNATIONAL
3/4 CONICA AGRICOLA

AG-05
AG-06

CONICA AGRICOLA HEX 1.1/8 ALT 1"



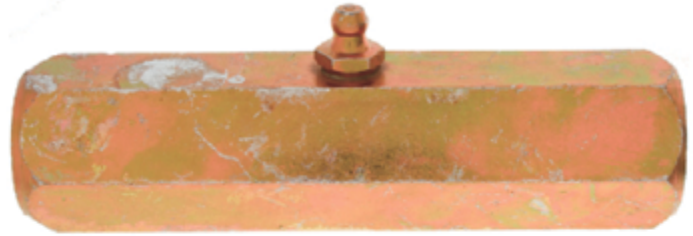


INTERNACIONAL 1" 14 H

TUERCA ARADO HEX 1.1/2 ALT 3/4



AG-10



5/8 HEX 15/16	11 HILOS R/L 4"	CH-10
3/4 HEX 1.1/4	10 HILOS R/L 4"	CH-11
7/8 HEX 1.1/4	9 HILOS R/L 4"	CH-12
1" HEX 1.1/2	8 HILOS R/L 4"	CH-13

CACAHUATE TEMPLADOR CON GRASERA

3/16 X3
1/4 X3
5/16 X3
3/8 X3
7/16 X3
1/2 X3
9/16 X3
5/8 X3
3/4 X3

CU-01
CU-02
CU-03
CU-04
CU-05
CU-06
CU-07
CU-08
CU-09



CUÑAS CUADRADAS



5/8X3
5/8X3 1/2
3/4X3
3/4X3 1/2
3/4X4
1/2X3

AB-01
AB-02
AB-03
AB-04
AB-05
AB-06

ALBARDON



CHAVETA ARO 1/4 **CH-01**
CHAVETA ARO 5/16 **CH-02**
CHAVETA ARO 3/8 **CH-03**

CHAVETAS DE ARO



5/16	24 HILOS NF	HEX 9/16	IZ-03L
5/16	18 HILOS NC	HEX 9/16	IZ-04L
8MM X1.0		HEX 9/16	IZ-05
8MM X1.25		HEX 9/16	IZ-06
3/8	24HILOS NF	HEX 9/16	IZ-07L
3/8	18HILOS NC	HEX 9/16	IZ-08L
7/16	20HILOS NF	HEX 11/16	IZ-09L
7/16	14HILOS NC	HEX 11/16	IZ-10L
10MM X1.25		HEX 11/16	IZ-11
10MM X1.5		HEX 11/16	IZ-12

TUERCA IZQUIERDA





12MM X1.25	HEX 3/4	IZ-13L
12MM X1.5	HEX 3/4	IZ-14L
12MM X1.75	HEX 3/4	IZ-15L
3/4 10 HILOS NC	HEX 1.1/8	IZ-20
1/2 20 HILOS NF	HEX 3/4	IZ-20L
1/2 13 HILOS NC	HEX 3/4	IZ-21L
9/16 18 HILOS NF	HEX 7/8	IZ-22L
9/16 12 HILOS NC	HEX 7/8	IZ-23L
5/8 18 HILOS NF	HEX 15/16	IZ-24L
5/8 11 HILOS NC	HEX 15/16	IZ-25L
3/4 16 HILOS NF	HEX 1.1/4	IZ-27L

TUERCA IZQUIERDA



CEJA 1.1/8 "R"
CEJA 1.1/8 "L"

EP-05
EP-06

TUERCA DESTAPADA GALVANIZADA



ESFERICA 1.1/8 "R"
ESFERICA 1.1/8 "L"

EP-01
EP-02

TUERCA DESTAPADA CROMADA



ESFERICA 1.1/8 "R"
ESFERICA 1.1/8 "L"

EP-07
EP-08

TUERCA DESTAPADA GALVANIZADA



1.1/8 "R" EP-03
1.1/8 "L" EP-04

TUERCA TAPADA CROMADA

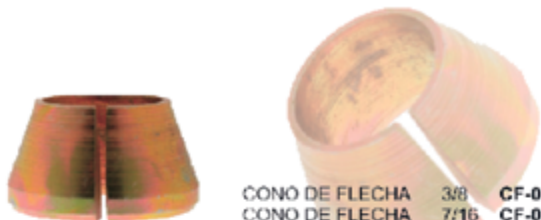


CEJA 1.1/8 "R"
CEJA 1.1/8 "L"

EP-09
EP-10

TUERCA DESTAPADA CROMADA





- | | | |
|----------------|-------|-------|
| CONO DE FLECHA | 3/8 | CF-01 |
| CONO DE FLECHA | 7/16 | CF-02 |
| CONO DE FLECHA | 1 1/2 | CF-03 |
| CONO DE FLECHA | 9/16 | CF-04 |
| CONO DE FLECHA | 5/8 | CF-05 |
| CONO DE FLECHA | 3/4 | CF-06 |

CONO DE FLECHA



SEDAN 8X1.5

VW-01

TUERCA TAPADA PARA CARTER VW



TCA BALANCIN 5/16
TCA BALANCIN 3/8
TCA BALANCIN 7/16

BAL-01
BAL-02
BAL-03

TUERCA BALANCIN

